

Similar Image



# Throttling butterfly valve, Analog/TTL controller

HV throttling butterfly valve, DN 200 ISO-F, QPAG controller, 24 VDC, SS

Part number: TBVQPANG-L113

Nor-Cal Products

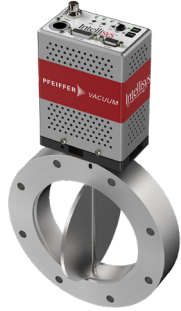


by PFEIFFER VACUUM

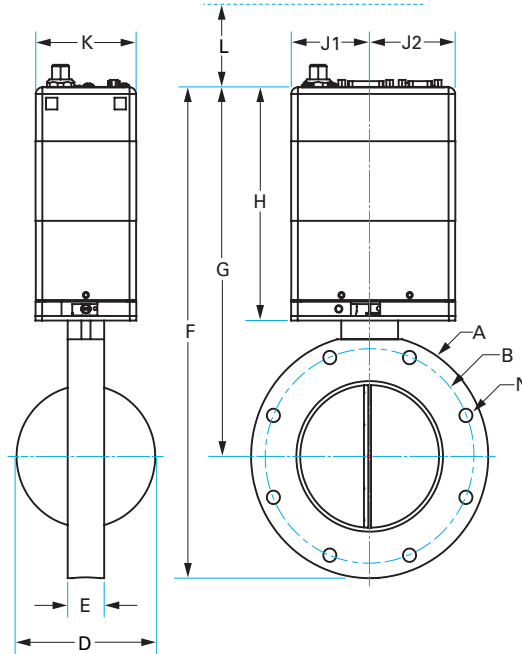
## Throttling butterfly valve, Analog/TTL controller

### HV throttling butterfly valve, DN 200 ISO-F, QPAG controller, 24 VDC, SS

- Adaptive algorithm for improved stability and faster transitions
- Space saving, low cost design
- High reliability, low particle generation
- Can be operated in any orientation
- Body can be heated up to 200°C with optional heaters
- CE marked/fully REACH and RoHS compliant



Similar Image



Dimensions (in inches)	
Dim A	11.2"
Dim B	10.2"
Dim C	0.433"
Dim D	7.88"
Dim E	1.62"
Dim F	18.2"
Dim G	12.6"
Dim H	6.22"
Dim J-1	2.17"
Dim J-2	2.36"
Dim K	2.76"
Dim L	2.36"
Bolt Hole Dia.	0.438"
# Bolt Holes	12

#### TBVQPANG-L113

Parameters	Specifications
Valve / Flange Size	DN 200 ISO-F
Communications Interface	Analog
Additional Controller Features	Gauge Supply
Flange Size / Type	DN 200 ISO-F
Controller Communications	Analog/TTL system interface; RS232 service port
Supply Voltage	24 V DC ( $\pm 5\%$ )
Power Connector	XLR, 5-pin, Female
Gauge Power Supply	$\pm 15$ V DC ( $\pm 5\%$ ), 1.4 A max.
Pressure Range	$1 \cdot 10^{-8}$ mbar to 1.1 bar
Max Differential at Opening	1100 mbar
Max Temp (body)	150 °C

**Throttling butterfly valve, Analog/TTL controller**  
**HV throttling butterfly valve, DN 200 ISO-F, QPAG controller, 24 VDC, SS**

**TBVQPANG-L113**

Parameters <i>(Continued)</i>	Specifications <i>(Continued)</i>
Temp. Limits (actuator)	5 °C (minimum), 45 °C (maximum)
Open / Close Time	250 ms/250 ms
Open Conductance	7800 l/s
Min. Control Conductance	2.8 l/s
Material (valve body)	316L Stainless Steel
Material (valve mechanism)	316L Stainless Steel
Plate Seal	none
Shaft Seal	FKM
Leak Rate (body)	$1 \cdot 10^{-9}$ mbar l/s
Service Life	5 million cycles
Weight	28.6 lbs

## VACUUM SOLUTIONS FOR INDUSTRY & RESEARCH

Nor-Cal Products is a premier global source for custom and standard high and ultra-high vacuum chambers and components critical to the success of industrial, semiconductor, coating, analytics, and research applications. We offer an extensive selection of vacuum line fittings, hardware, valves and components which complement our custom manufacturing capabilities.

## EARNING YOUR TRUST

Innovative engineering, precision manufacturing, exceptional service and expert technical support are cornerstones of our corporate culture and continuous improvement goals. Your trust is our most important asset.

## INNOVATION SINCE 1962

An added value to working with Nor-Cal Products is how we apply our vacuum science and industry expertise to your production and research goals and timelines. We continue to develop new component lines and services to serve the demands of the exciting and ever emerging applications that require vacuum components.

### Nor-Cal Products

Headquarters: USA

1-800-824-4166 or 530-842-4457

[nccsales@n-c.com](mailto:nccsales@n-c.com)

[www.n-c.com](http://www.n-c.com)



RoHS2/REACH compliant  
Conflict mineral regulations enforced

All data subject to change without prior notice.

Nor-Cal Products



by PFEIFFER VACUUM